

SoCal Wildfires – Los Angeles County

SitRep – January 2025

January 9

Good360 DR Activation Status – **Fully Activated**

As the Southern California wildfires continue to rage, a [Major Disaster Declaration](#) has been approved for Los Angeles County under [DR-4856-CA](#). FEMA is also actively mobilizing supplies and staff as Fire Management Assistance Declarations have been made for the Palisades, Eaton, and Hurst fires. As of 6pm EST, the Palisades Fire, Eaton Fire, and Sunset Fire are at 0% [containment](#) and have burned more than 27,500 acres of land. Progress has been made in the Hurst Fire with 10% containment while the Lidia Fire is at 60%. More than 2,000 structures have been destroyed, 4 fire fighters were injured, 5 fatalities have been reported, and about [180,000](#) residents have been forced to evacuate affected communities. Considering it's magnitude and reach, the Palisades Fire has been identified as the [most destructive fire](#) to take place in the City of Los Angeles.

| | | |
|--|--|---|
| <p>Palisades Fire</p> <p>Started: Jan. 7, 2025</p> <p>Acres burned: 17,234</p> <p>Containment: 0%</p> <p>Damage: More than 1,000 structures destroyed and more than 10,000 at risk</p> <p>Description: The fire started southeast of Palisades Drive in Pacific Palisades.</p> <p>Fire details →</p> | <p>Eaton Fire</p> <p>Started: Jan. 7, 2025</p> <p>Acres burned: 10,600</p> <p>Containment: 0%</p> <p>Injuries: 4 firefighters injured</p> <p>Deaths: 5 people killed</p> <p>Damage: More than 1,000 structures destroyed</p> <p>Description: The fire began burning near Altadena Drive and Midwick Drive in the area of Altadena and Pasadena</p> <p>Fire details →</p> | <p>Hurst Fire</p> <p>Started: Jan. 7, 2025</p> <p>Acres burned: 855</p> <p>Containment: 10%</p> <p>Description: The fire sparked the evening of Jan. 7 near Diamond Road in Sylmar. Evacuation orders and warnings have been issued.</p> <p>Fire details →</p> |
| <p>Sunset Fire</p> <p>Started: Jan. 8, 2025</p> <p>Acres burned: 43</p> <p>Containment: 0%</p> <p>Description: The fire started on the 2300 block of Solar Drive in the Hollywood Hills in Los Angeles.</p> <p>Fire details →</p> | <p>Lidia Fire</p> <p>Started: Jan. 8, 2025</p> <p>Acres burned: 348</p> <p>Containment: 60%</p> <p>Description: The fire sparked near the 5700 Block of Soledad Canyon Road in Acton.</p> <p>Fire details →</p> | |

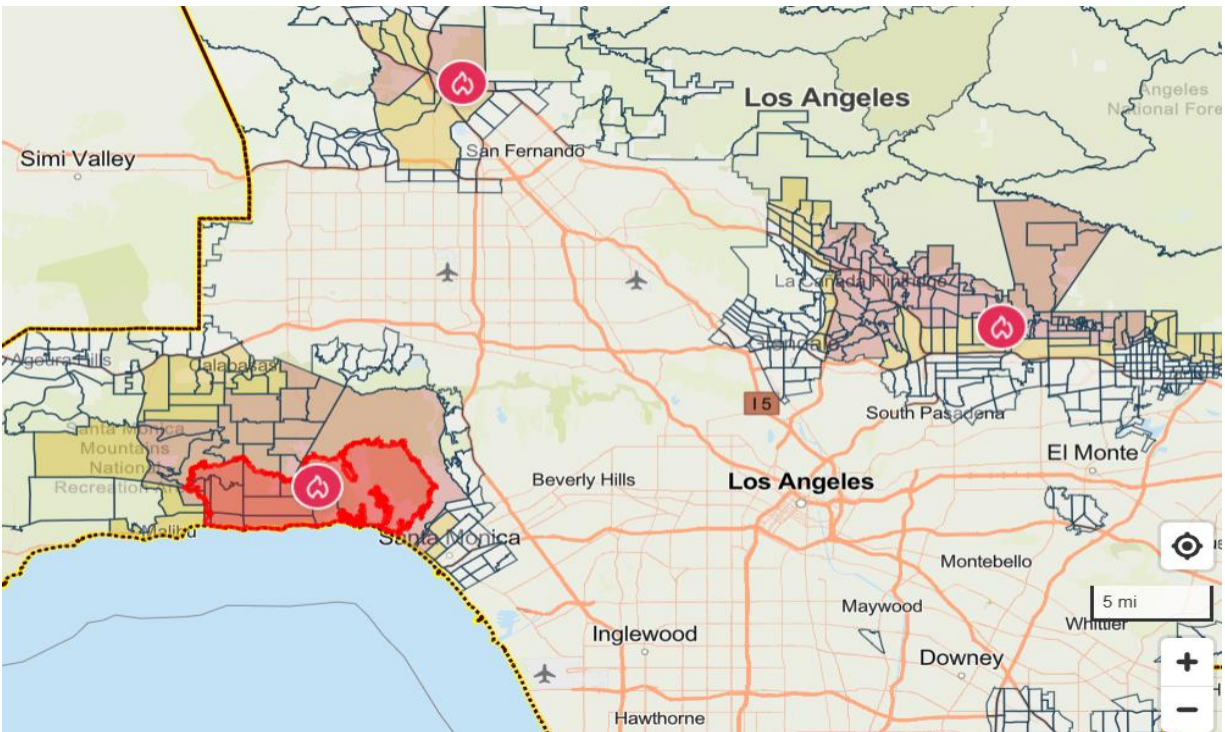
Further impacts to infrastructure have been reported including energy, water, and health. Currently, over 400,000 customers are without [power](#) throughout the state of California with approximately 200,000 outages in Los Angeles County alone. The [Lincoln Avenue Water Company](#) and [Rubio Cañon Land & Water Association](#) located in Altadena have a “do not use notice” for Los Angeles County. Customers are being urged to only use bottled water for bathing, cooking, cleaning, etc., as boiling water will

not make it safe for consumption or use. The Los Angeles County Department of Public Health has also reported an “unhealthy air quality” declaration, warning residents to limit or avoid outdoor exposure to smoke. According to their [website](#), “The primary health concern is the small particles, which can cause burning eyes, runny nose, scratchy throat, headaches and illness (i.e., bronchitis).”



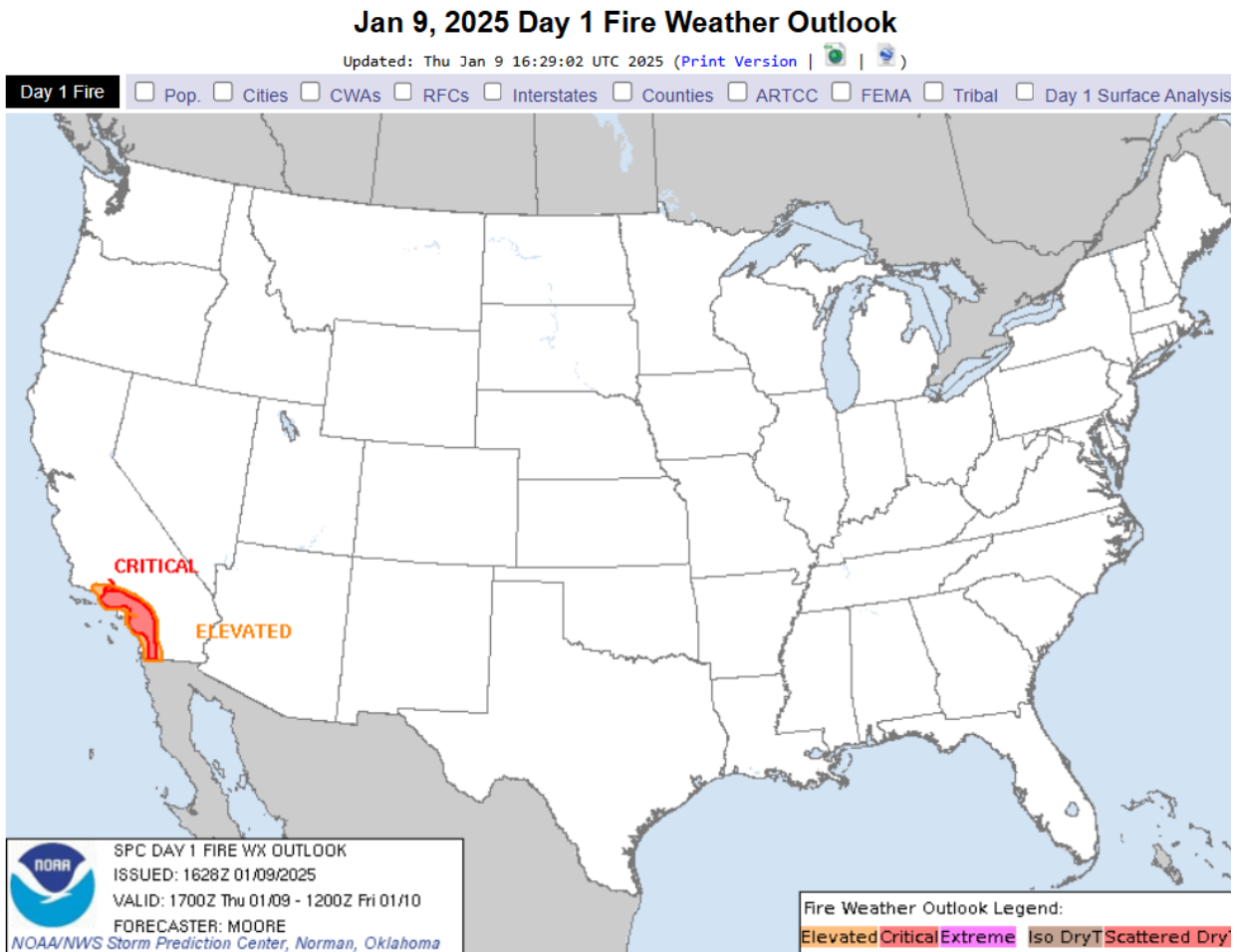
Watches, Warnings, and Evacuations

Evacuation watches and warnings are in place for Los Angeles County. The **red** highlighted areas below indicate regions under mandatory evacuation orders for fire that pose an immediate threat to life and property. The **yellow** highlighted areas indicate regions under voluntary evacuation orders due to the potential threat to life and property, evacuations are highly encouraged.



Potential Hazards

A [Critical Fire Weather](#) red flag warning has been issued for Los Angeles and Ventura Counties until 6pm on Friday, 1/10. Wind [gusts](#) in the Santa Ana corridor is likely to produce wind speeds between 35 to 55 mph while isolated mountain areas could experience speeds up to 75 mph. The region could potentially see a similar wind event Monday (1/13) into Tuesday (1/14).



Coordination Calls and Agency Updates

- Private Sector Emergency Management Association (PSEMA) – groups are currently in immediate response mode with a focus on evacuations and sheltering. Additional highlights included the following:
 - ASPCA is expected to have boots on the ground today in support of animal transport and sheltering.
 - Petco will be donating crates to assist with relocation operations.
 - California OES Business Ops Center has activated.
 - American Humane Society is looking for assistance with donation management.

- 3M Company may be able to supply immediate respiratory PPE equipment, if needed.
- Good360 DR met with disaster partners today to discuss the current state of the SoCal wildfires and the potential movements for response/recovery. Based on discussions, immediate needs are likely to include PPE (i.e., goggles, boots, gloves, etc.), sifters, and water.

Good360 and Partners

Good360 DR is currently fully activated. We are collaborating with partners mobilizing relief efforts to identify unmet needs.

- American Logistics Aid Network (ALAN) – has received several requests for shipping assistance and will be directing requests for use of the “100 Days of Rental” afforded to us by Ryder to disasterhelp@good360.org for processing.
- American Red Cross – there are currently 8 congregate [shelters](#) open with approximately 869 clients.

| Name/Location | Address | Current Population |
|--|---|--------------------|
| El Camino Real Charter High School (Los Angeles County) | 5440 Valley Circle Blvd., Woodland Hills, CA 90025 | 11 |
| Pacific Community Center & Park | 501 S. Pacific Avenue, Glendale, CA 91204 | 54 |
| Pan Pacific Recreation Center (Los Angeles County) | 7600 Beverly Blvd, Los Angeles, CA 90036 | 6 |
| Pasadena Civic Auditorium (Los Angeles County) | 300 E. Green St, Pasadena CA 91101 | 550 |
| Pomona Fairplex (Los Angeles County) | 1101 W McKinley Avenue, Pomona, CA 91768 | 2 |
| Ritchie Valens Recreation Center (Los Angeles County) | 10736 Laurel Canyon Blvd, Pacoima, CA 91331 | 11 |
| Stoner Recreation Center | 1835 Stoner Avenue, Los Angeles, CA 90025 | 0 |
| Westwood Recreation Center (Los Angeles County) | 1350 S. Sepulveda Blvd., Los Angeles, CA 90025 | 235 |

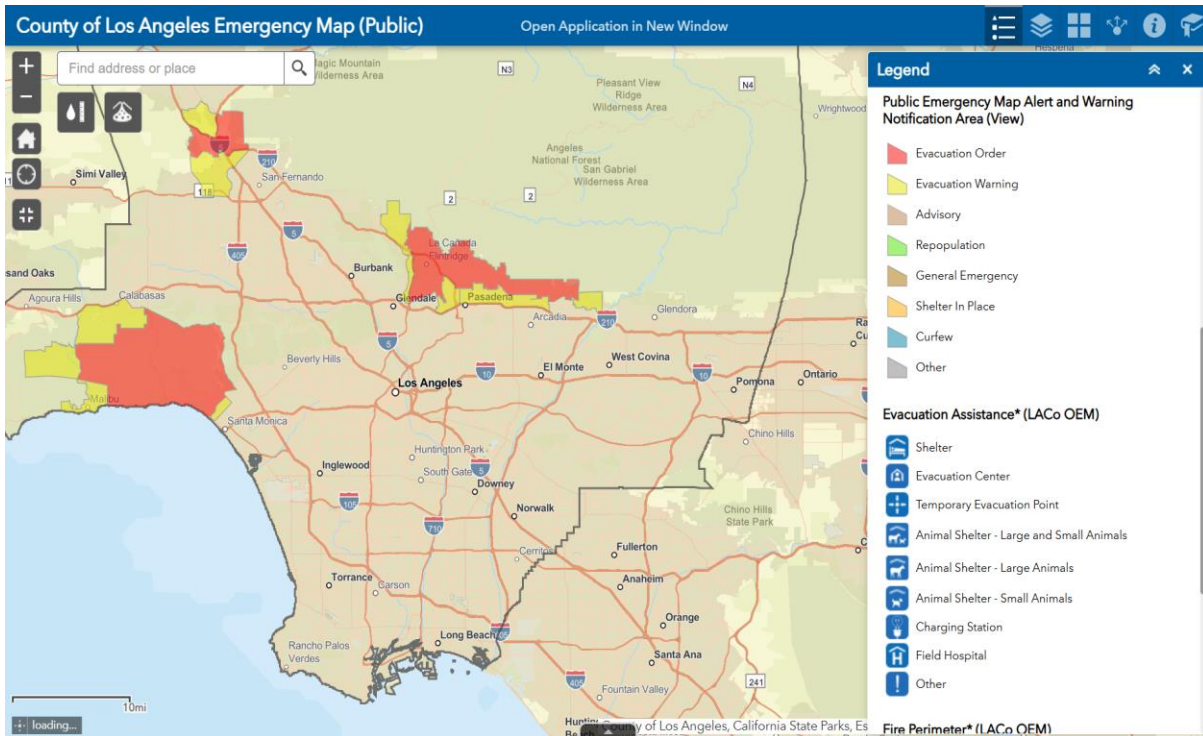
January 8



On January 7 at about 10:30am a wildfire ignited in the Pacific Palisades region of Los Angeles County. Burning at a [rate](#) of five football fields per minute, the Palisades fire has currently engulfed more than 2,900 acres of land at 0% containment. As a result of this quickly moving wildfire, Governor Gavin Newsom has declared a [state of emergency](#) for Los Angeles and Ventura Counties. As more than 30,000 people were forced to evacuate their homes throughout the evening, high winds attributed to two additional ignitions last night with a fourth fire igniting today in North Woodley. These fires, too, are currently at 0% containment and burning quickly. More ignition points are probable as first responders contend with high winds and dry land areas. In addition to fire conditions, more than 245,000 customers are without [power](#) in Los Angeles County with another 49,000 in Ventura County. Currently, at least two [fatalities](#) have been reported with more than 1,000 structures destroyed by the flames.

Watches, Warnings, and Evacuations

Evacuation watches and warnings are in place for Los Angeles County. The **red** highlighted areas below indicate regions under mandatory evacuation orders for fire that pose an immediate threat to life and property. The regions highlighted in **yellow** indicate the potential threat to life and property, allowing residents more time to fully evacuate the communities; evacuations are being encouraged though not mandatory.

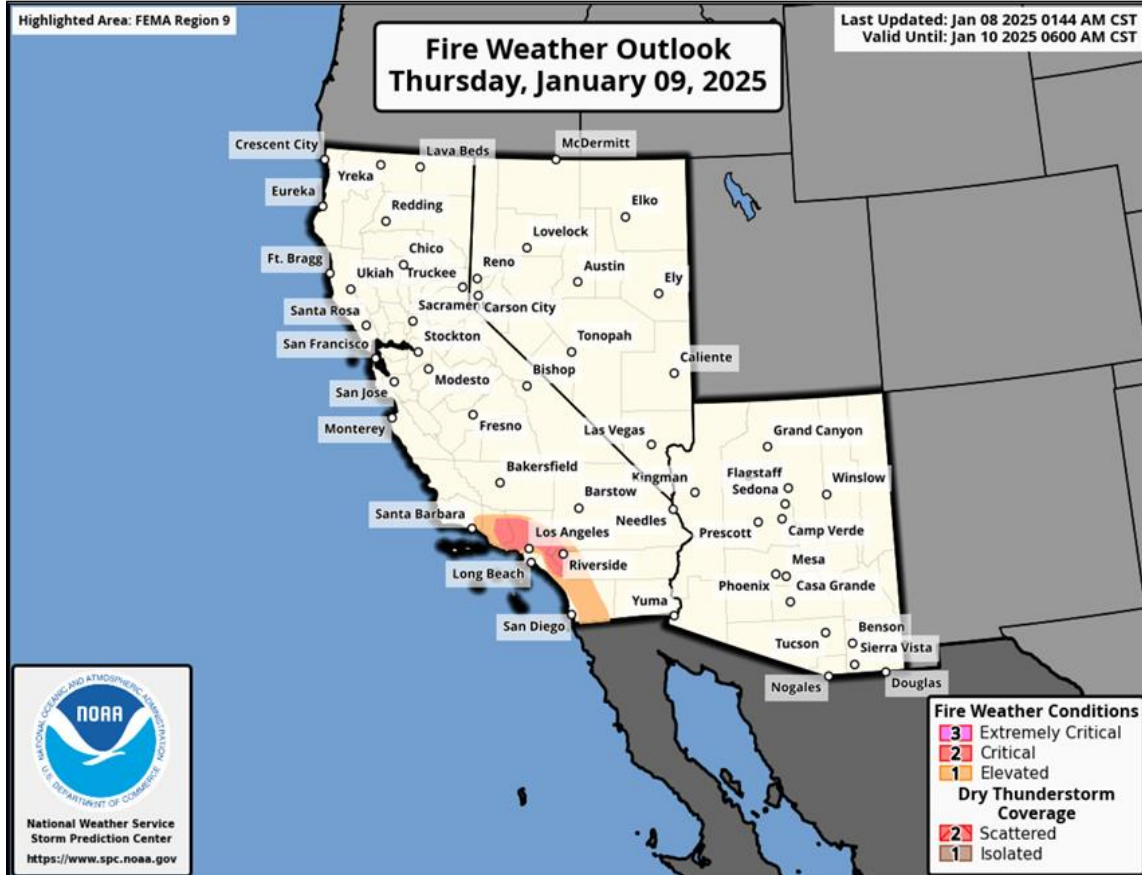


To support displaced residents, evacuation shelters have been opened including the following:

| | | |
|--|--|--|
| <p>Westwood Recreation Center 1350 South Sepulveda Blvd Los Angeles, CA 90025</p> | <p>El Camino Real Charter High School 5440 Valley Circle Blvd Woodland Hills, CA 91367</p> | <p>Pasadena Convention Center 300 E Green St Pasadena, CA 91101</p> |
| <p>Ritchie Valens Recreation Center 10736 Laurel Canyon Blvd Pacoima, CA 91331</p> | <p>Northridge Park 10120 Reseda Blvd Northridge, CA 91324</p> | <p>Sepulveda Recreation Center 8825 Kester Ave Panorama City, CA 9140</p> |
| <p>Pierce College Equestrian Center (Animal Shelter) 7100 El Rancho Drive Woodland Hills</p> | <p>Agoura Animal Care Center (Animal Shelter) 29525 Agoura Rd Agoura Hills, CA 91301</p> | <p>Los Angeles Equestrian Center (Animal Shelter) 480 W Riverside Dr Burbank, CA 91506</p> |

Potential Hazards

The National Weather Service issued a Particularly Dangerous Situation ([PDS](#)) red flag warning into Thursday for the Los Angeles/Ventura County Santa Ana wind corridor. Wind gusts could reach as high as 80 mph with isolated locations reaching speeds up to 100 mph. High winds along with dry land conditions have increased the risk of additional fire ignitions or may strengthen existing fires. Other concerns include poor air quality and depleted water pressure that may impact the use of fire hydrants in affected communities.





Coordination Calls and Agency Updates

No agency calls have been scheduled at this time.

Good360 and Partners

Good360 Disaster Recovery continues to monitor the situation. We have connected with DR partners who are expected to mobilize in response to this incident. Requests for assistance will be processed as they are received.